

ASCENDER™ 2010 FONT PACK

for Microsoft® Office 2010

 FontMarketplace

The Ascender 2010 Font Pack features a distinguished and versatile set of 14 fonts with enhanced OpenType features to showcase the advanced typographic features that are new in Microsoft Word 2010 and Microsoft Publisher 2010. Also included is a set of templates that show off the fonts in action.

The fonts were developed by the type experts at Ascender Corp and optimized for Office 2010. Included are brand new versions of Microsoft's Comic Sans and Trebuchet typeface families with new weights/styles. The Ascender 2010 Font Pack is available exclusively from www.FontMarketplace.com.

Comic Sans™ 2010 Regular

Comic Sans 2010 Italic 

Comic Sans 2010 Bold

Comic Sans 2010 Bold Italic 

Impact™ 2010

POKERFACE™ 2010

Rebekah™ 2010

Rebus Script™ 2010

Trebuchet™ 2010 Regular

Trebuchet 2010 Italic

Trebuchet 2010 Bold

Trebuchet 2010 Bold Italic

Trebuchet 2010 Black 

Trebuchet 2010 Black Italic 

NEW FONT FEATURES IN OFFICE 2010

Microsoft Word 2010 and Microsoft Publisher 2010 have a variety of new features for advanced typographic effects. The following are examples of the special features that can be accessed in specially-developed OpenType fonts.

 Ligatures


first first

 Figure Styles

1942 1942

 Stylistic Sets

TURKEY TURKEY

 Contextual Alternates

Sunday  day

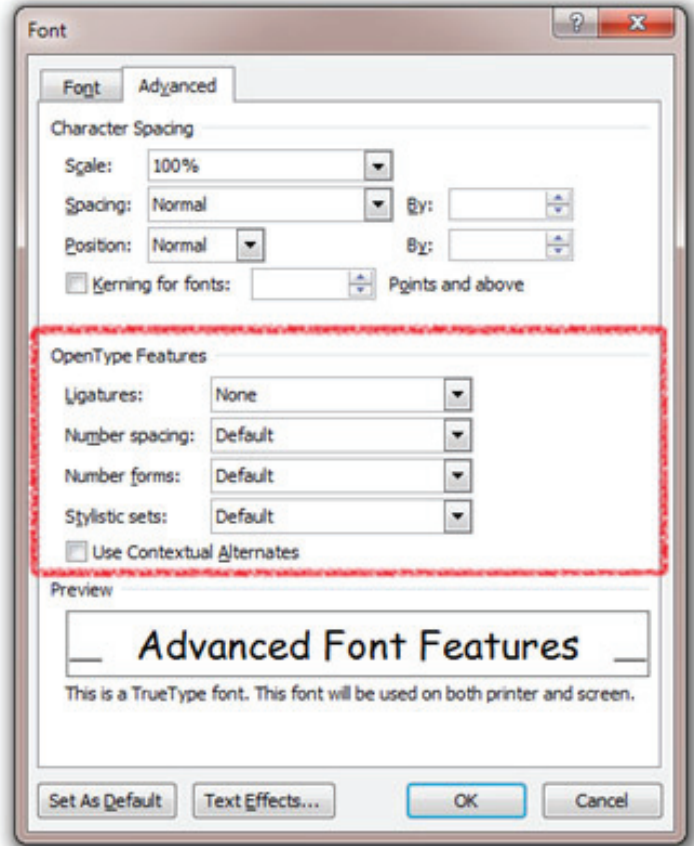
 Swashes

A Taste A Taste

HOW TO APPLY OPENTYPE FEATURES

1. Select the text you want to format.
2. On the Home tab, click the Font Dialog Box Launcher (in the lower right corner).
3. Click on the Advanced tab to see the OpenType features. (Note: the illustration on the right is from Microsoft Word 2010. The Font menu in Publisher 2010 is slightly different.)

Tip: "What if the OpenType features are greyed out? The OpenType Features section will be grayed out when text is selected with a font that does not have OpenType features. Also, the OpenType Features will be grayed out for any document opened in Compatibility Mode.



FONTS IN USE:

